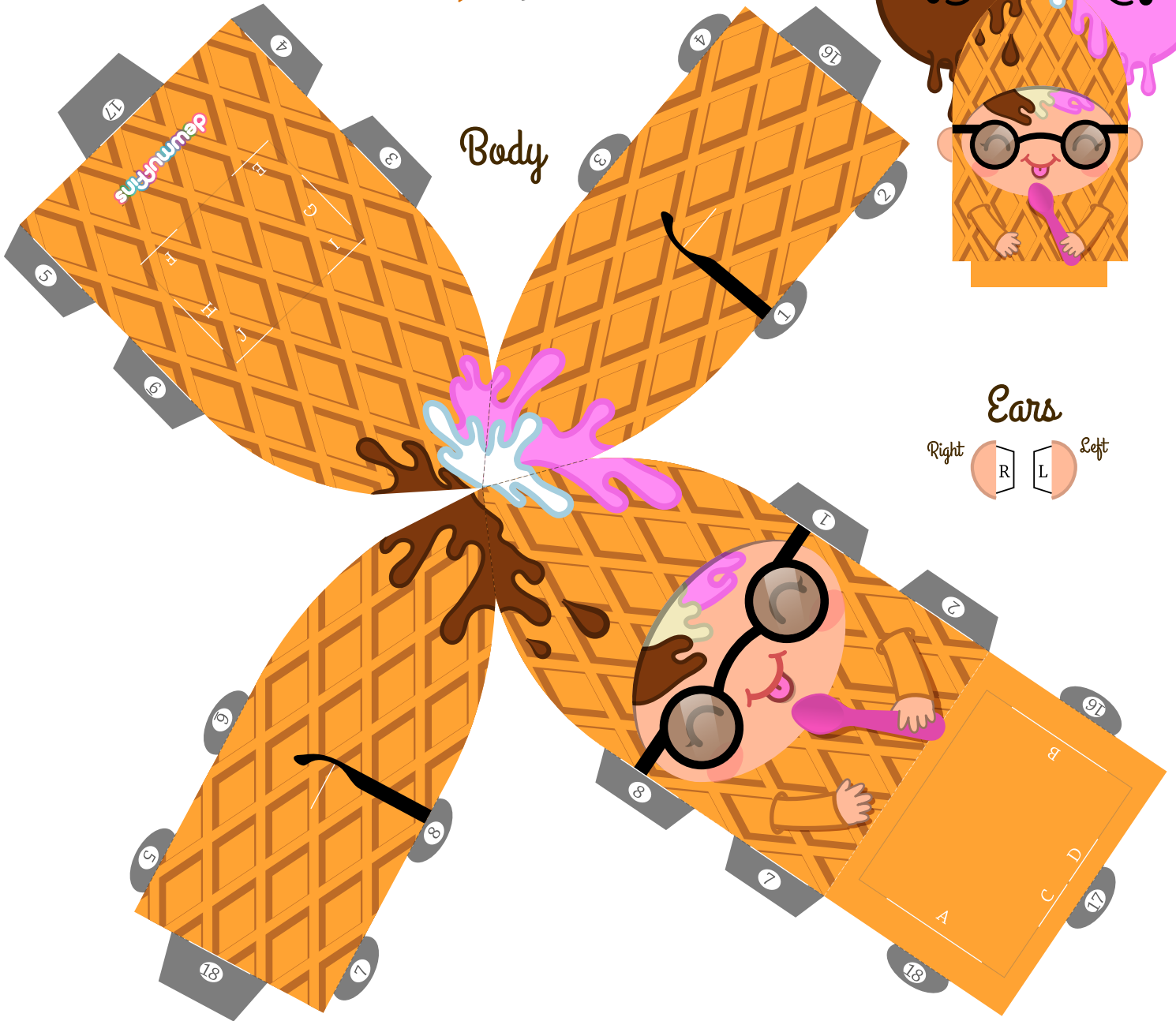


Terralings Triple Dippy



Body

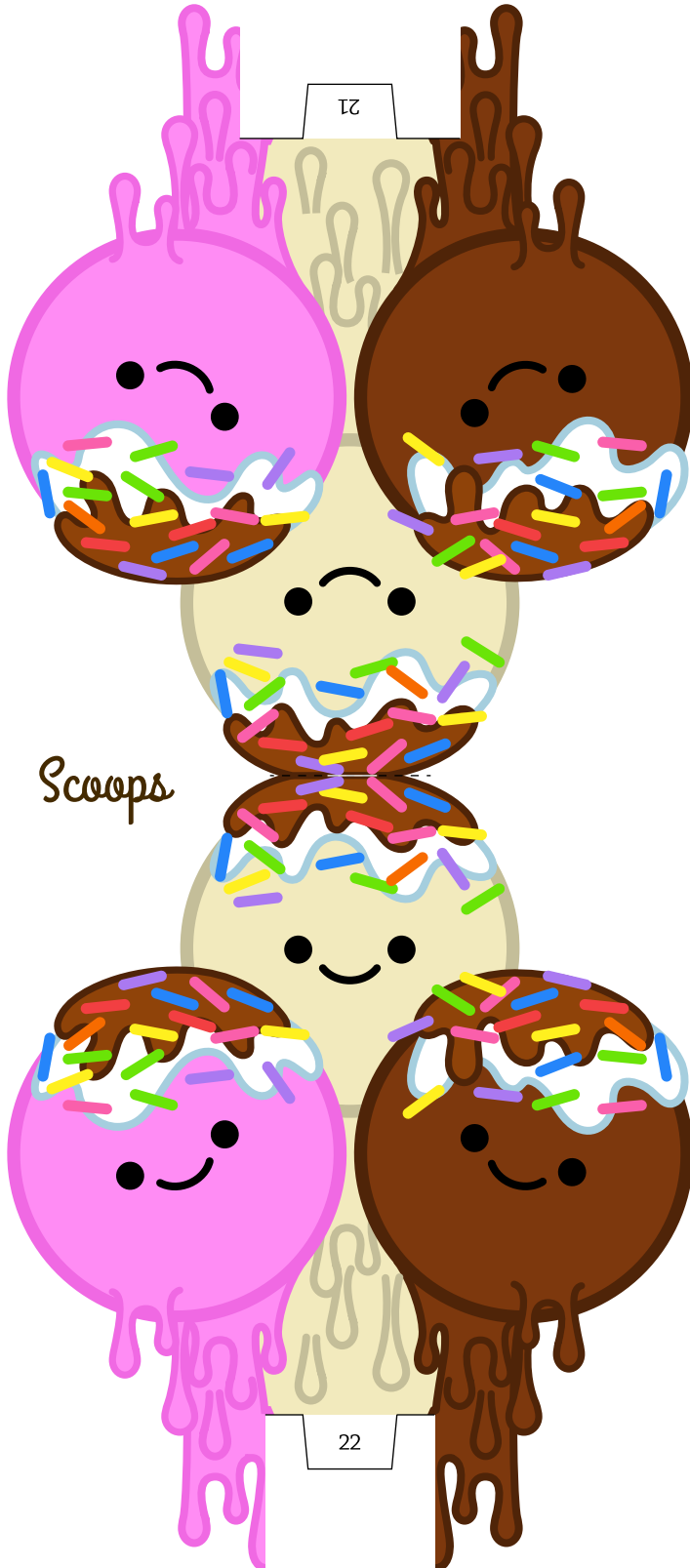
Ears

Right (R) Left (L)

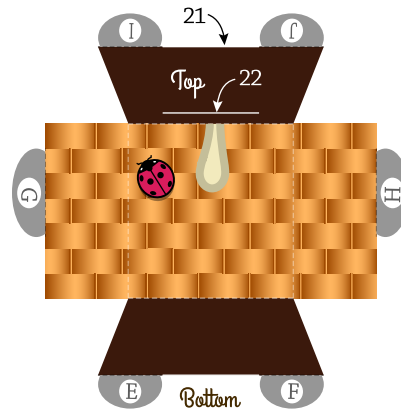
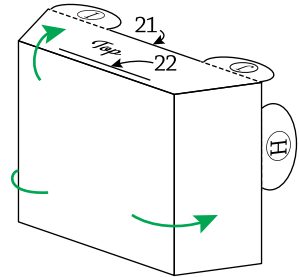
Base



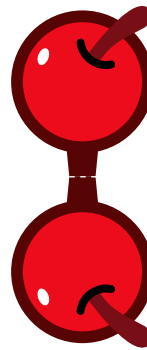
Terralings Triple Dippy



Scoops



Basket



Cherry

Supplies:

1. Color printer.
 2. Paper (thick paper works best).
 3. Craft knife.
- Glue not required.

Instructions:

1. Print.
2. Cut along exterior lines, then internal white lines.
3. Score and Fold dashed lines.
4. Assemble the Basket, Base, and Ears to the Body. Assemble Body, Assemble Scoops to Basket, Add Cherry.

Skill Level

Easy ———●——— Advanced